

# LICENSING SUB COMMITTEE

Tuesday, 23 September 2014 at 3.00 p.m.

Room C1, 1st Floor, Town Hall, Mulberry Place, 5 Clove Crescent,  
London, E14 2BG

## SUPPLEMENTAL AGENDA

This meeting is open to the public to attend.

**Contact for further enquiries:**

Simmi Yesmin, Democratic Services  
1st Floor, Town Hall, Mulberry Place, 5 Clove Crescent, E14 2BG  
Tel: 020 7364 4120  
E-mail: [simmi.yesmin@towerhamlets.gov.uk](mailto:simmi.yesmin@towerhamlets.gov.uk)  
Web: <http://www.towerhamlets.gov.uk/committee>

Scan this code for  
the electronic  
agenda:



**3 .2 Application for a New Premises Licence for (Maison  
Trois Garcon), 45 Redchurch Street, London E2 7DJ**

Premises plan

**PAGE  
NUMBER(S)**  
1 - 4

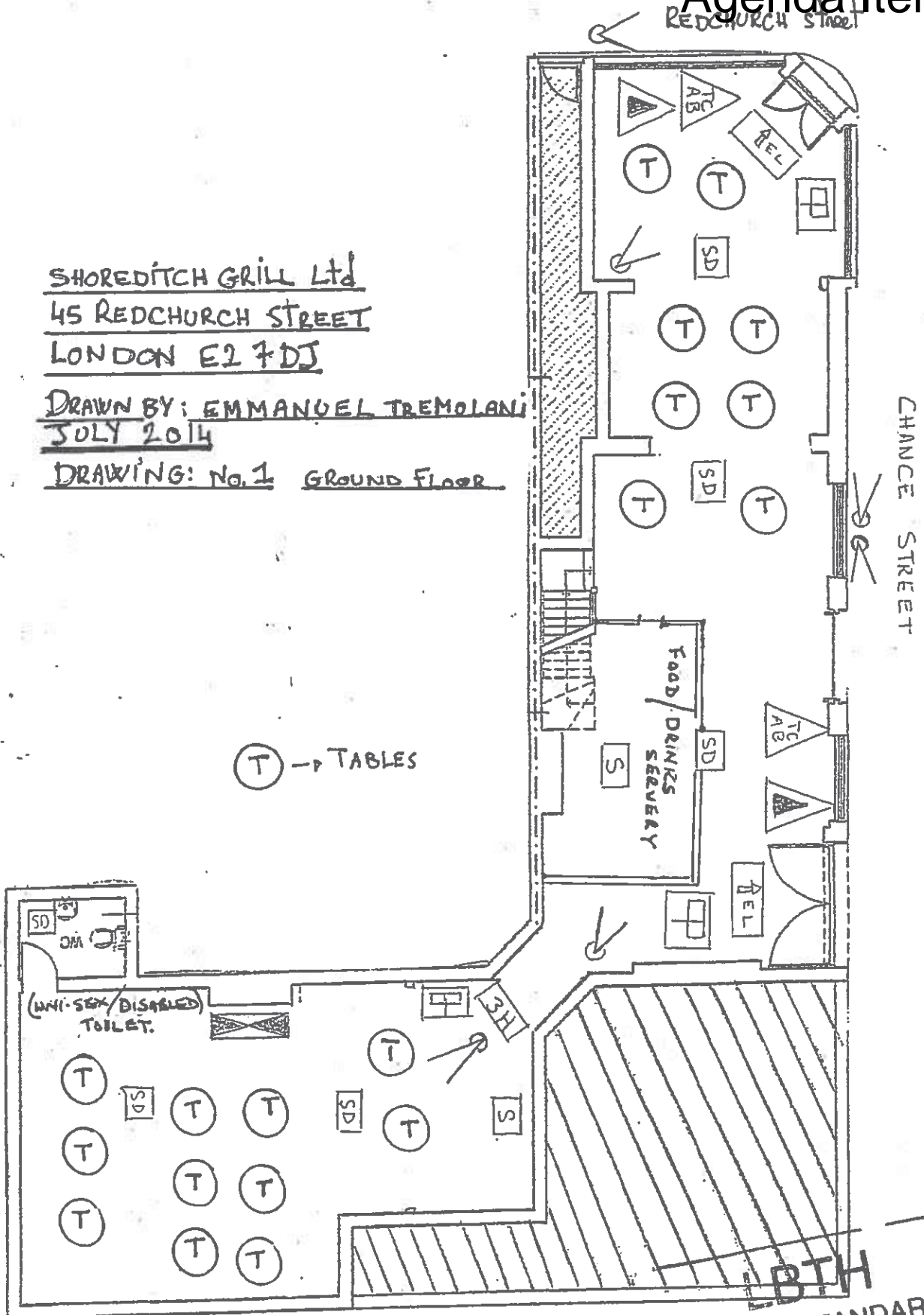
**WARD(S)  
AFFECTED**  
Weavers

This page is intentionally left blank

SHOREDITCH GRILL LTD  
45 REDCHURCH STREET  
LONDON E2 7DJ

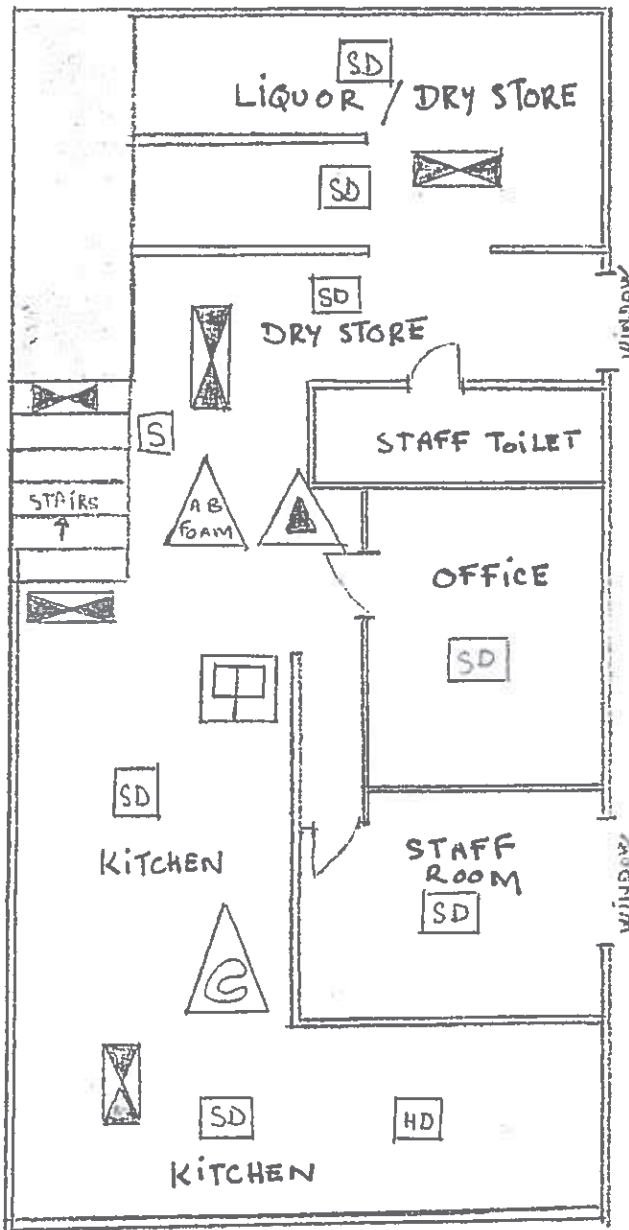
DRAWN BY: EMMANUEL TREMOLANI  
JULY 2014

DRAWING: No. 1 GROUND FLOOR



**LBTH**  
**TRADING STANDARDS**  
 23 JUL 2014  
**LICENSING**

REDCHURCH STREET



CHANCE STREET

SHOREDITCH GRILL LTD - LOWER GROUND FLOOR

45 REDCHURCH STREET - LONDON E2 7DJ

DRAWN BY: EMMANUEL TREMOLANI JULY 2014

DRAWING No. 2 LOWER GROUND FLOOR

# KEY TO PLAN SYMBOLS — July 2014

## FIRE FIGHTING EQUIPMENT

SHOREDITCH GRILL Ltd

45 REDCHURCH STREET E1 7DJ



ESCAPE LIGHTING THAT WILL ILLUMINATE UPON FAILURE OF NORMAL LIGHTING POWER SUPPLY

SD

SMOKE DETECTOR

HD

HEAT DETECTOR

S

SOUNDER/STROBE



MAINTAINED RECESSED LED EMERGENCY LIGHTING



TRI-CLASS FIRE EXTINGUISHER  
A - Wood PAPER - B Liquid - ELECTRICAL



FOAM FIRE EXTINGUISHER A-B  
Wood - Paper - Liquid



CARBON DIOXIDE B FIRE EXTINGUISHER  
Liquid - ELECTRICAL



FIRE BLANKET

3H

EMERGENCY LIGHTING "FIRE EXIT" SIGN  
RUNNING MAN



WIDE ANGLE CCTV



TABLES

This page is intentionally left blank